

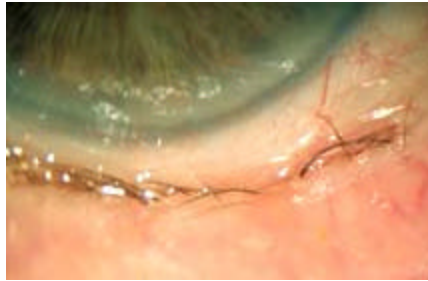
Entropion

(Inward Turning Eyelid)

Overview

Entropion, an **eyelid** that turns inward, is a problem that typically affects the lower lid. It usually stems from a muscle spasm; however, it can also be caused by scarring from trauma or inflammation from certain diseases that involve the eyelids.

When the eyelid turns inward, the lashes rub against the eye, resulting in irritation, scratchiness, tearing and redness. **Surgery** is often required to correct the problem.



Signs and Symptoms

- Tearing
- Burning
- Irritation
- Sandy, gritty feeling
- Red eye

Detection and Diagnosis

Entropion can be detected during a routine eye exam. A **slit lamp microscope** is used to examine the effects of the in-turned eyelashes on the surface of the eye.

Treatment

The most effective treatment for entropion is surgery, although some patients find temporary relief by pulling the lower lid down with a piece of tape. Artificial tears are also helpful to ease the irritation caused from the lashes rubbing against the eye.